

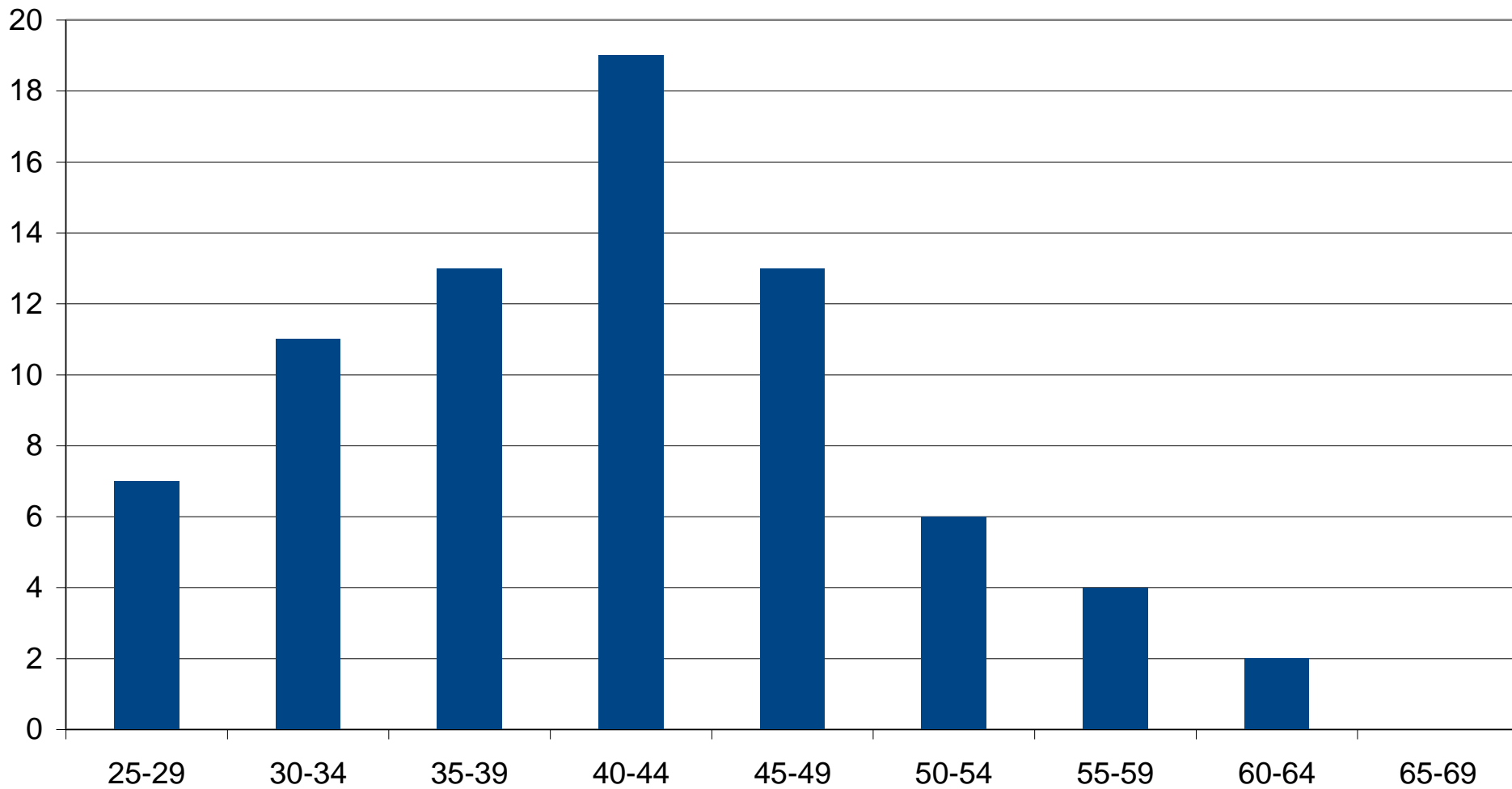
Primo censimento dei meteorologi italiani

75 schede

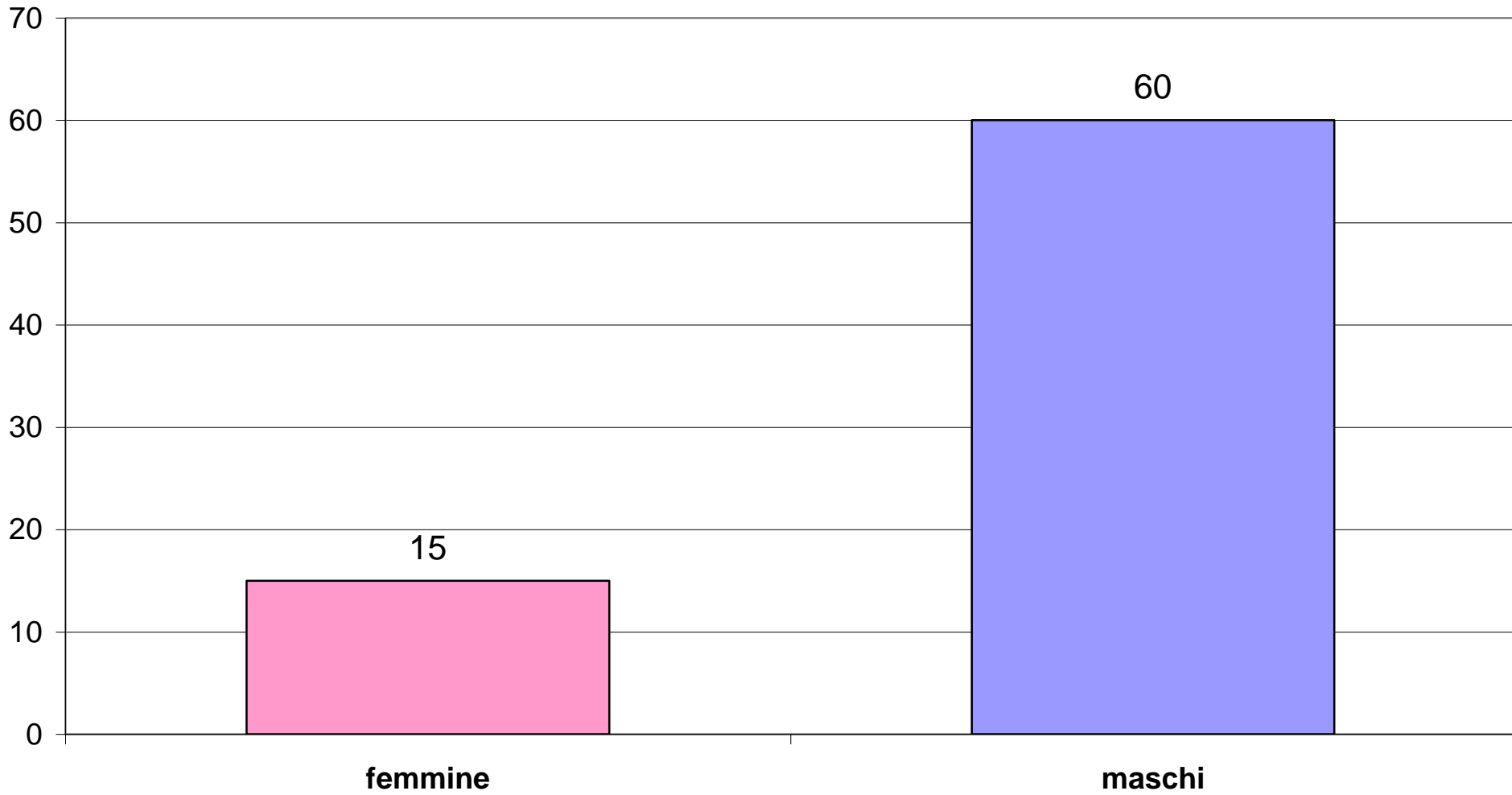
- 21 giugno 2014 – baco suddivisione scale anni ed età
- 23 giugno 2014 – inserito grafico suddivisione anni-competenze + baco lavoro precario/stabile
- 25 giugno 2014 – inserito altre 3 schede
- 31 gennaio 2015 – inserimento di altre schede a seguito del Secondo Censimento realizzato per la verifica delle materie studiate nel corso di laurea.

età

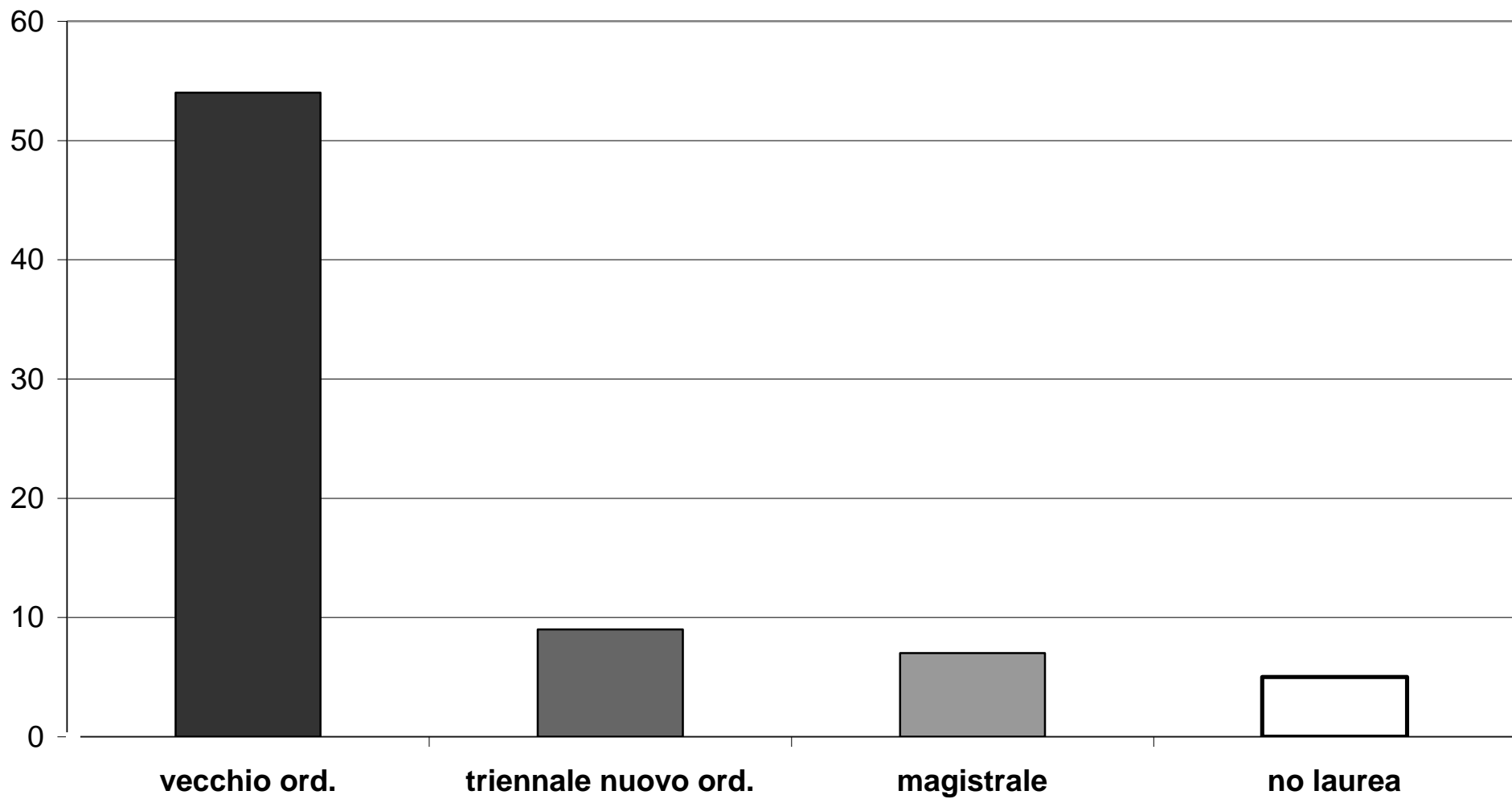
(al maggio 2014)



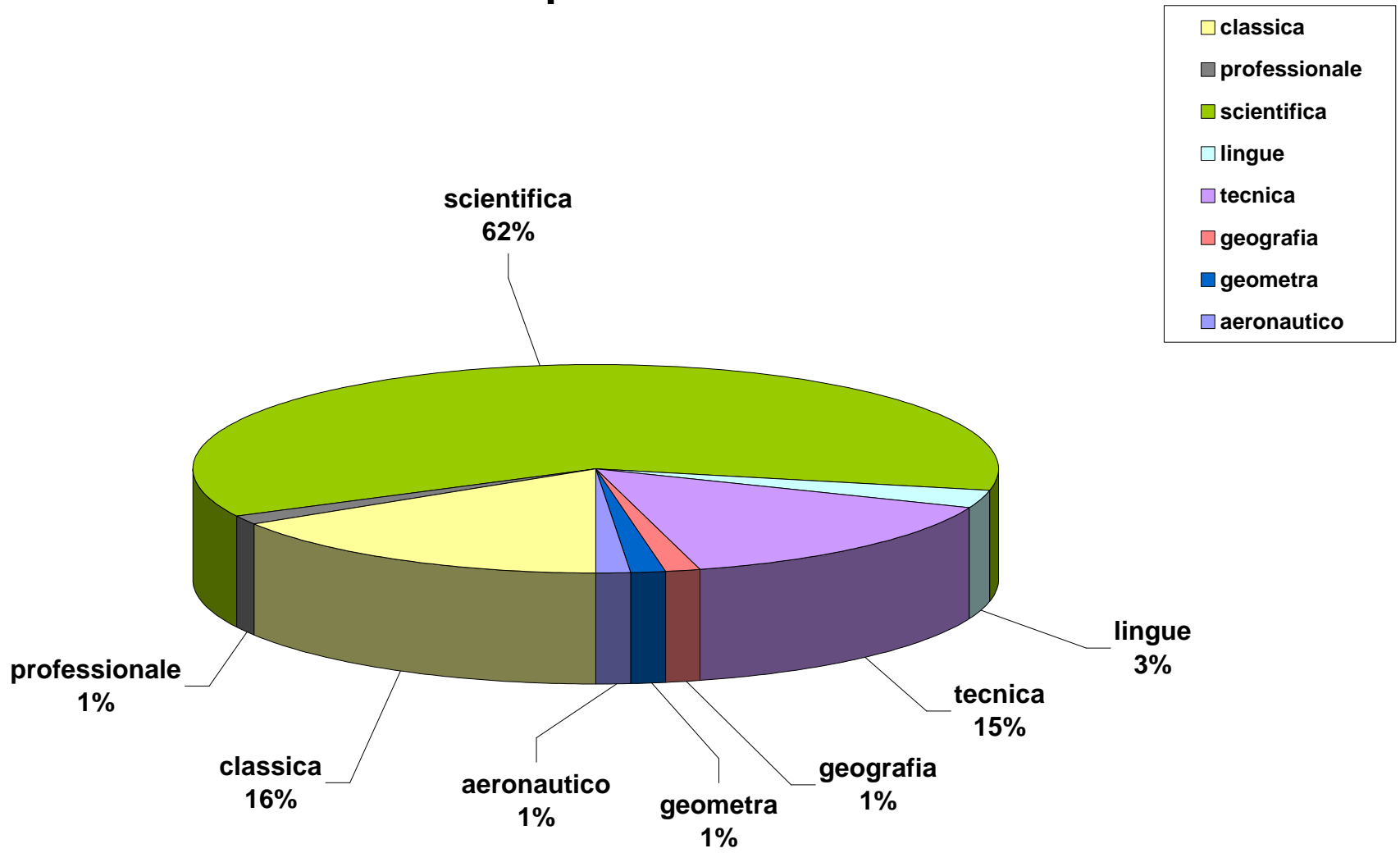
Sesso



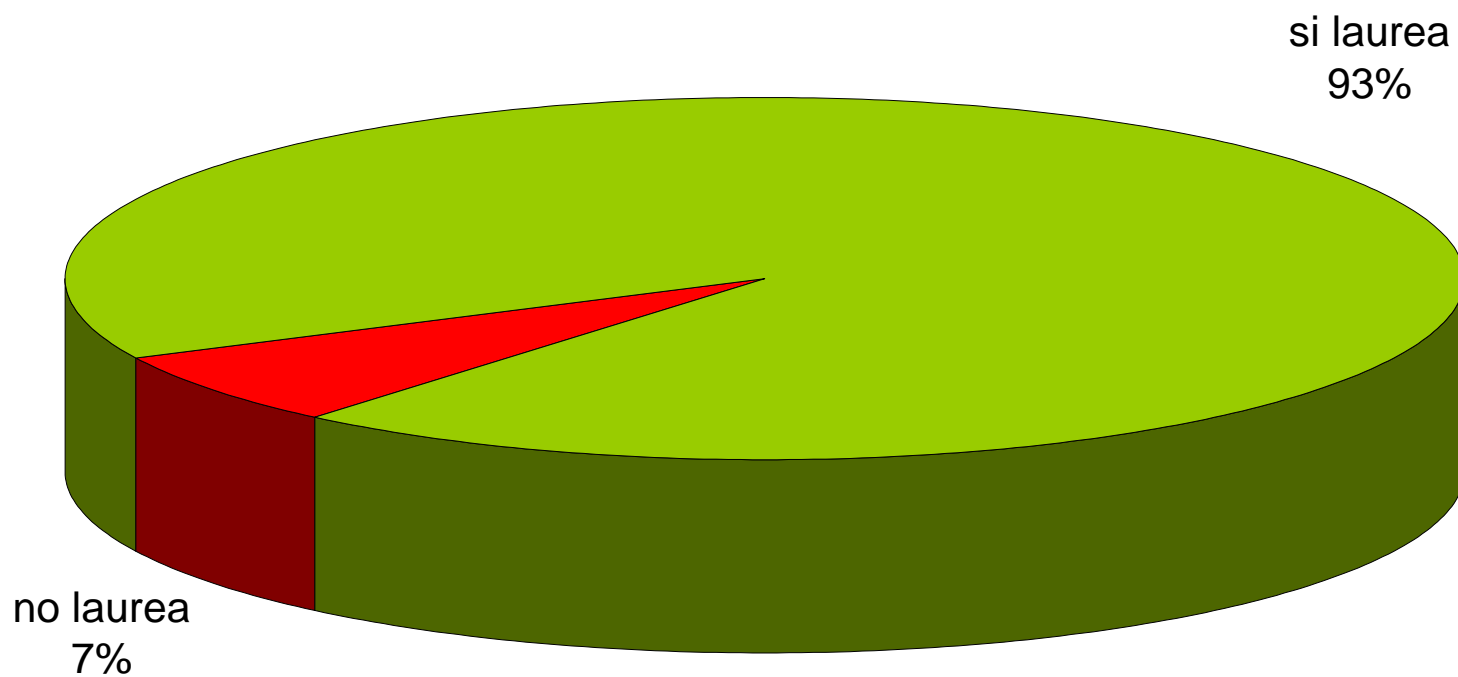
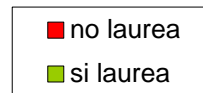
laurea // ordinamento



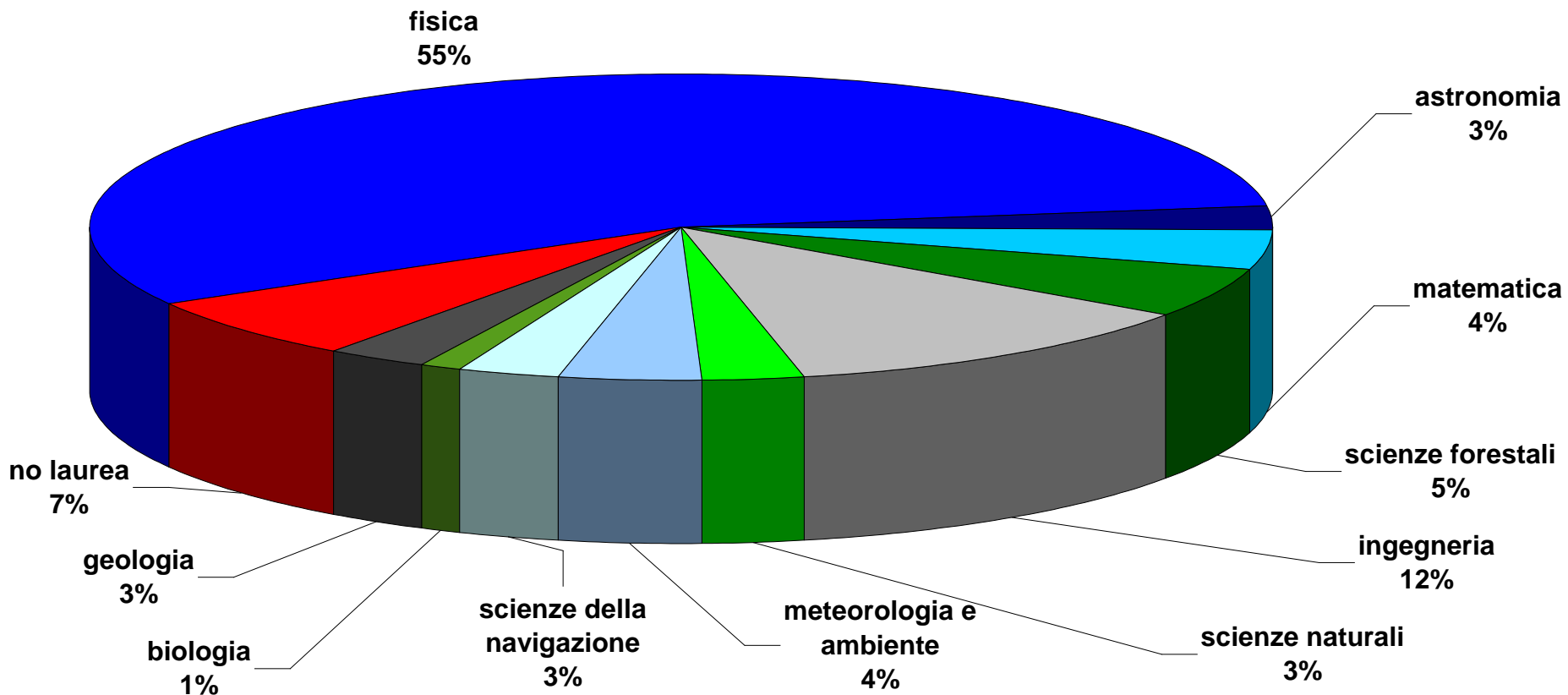
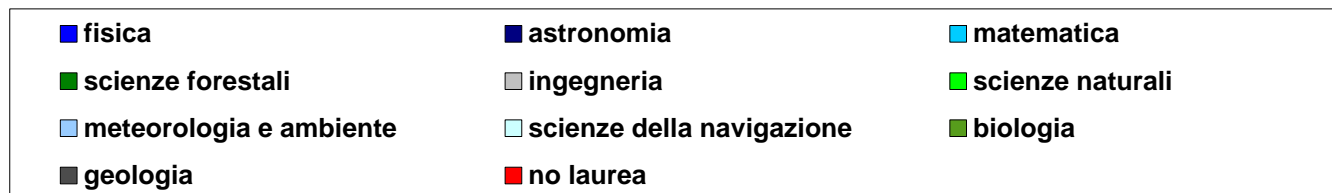
tipo di maturità



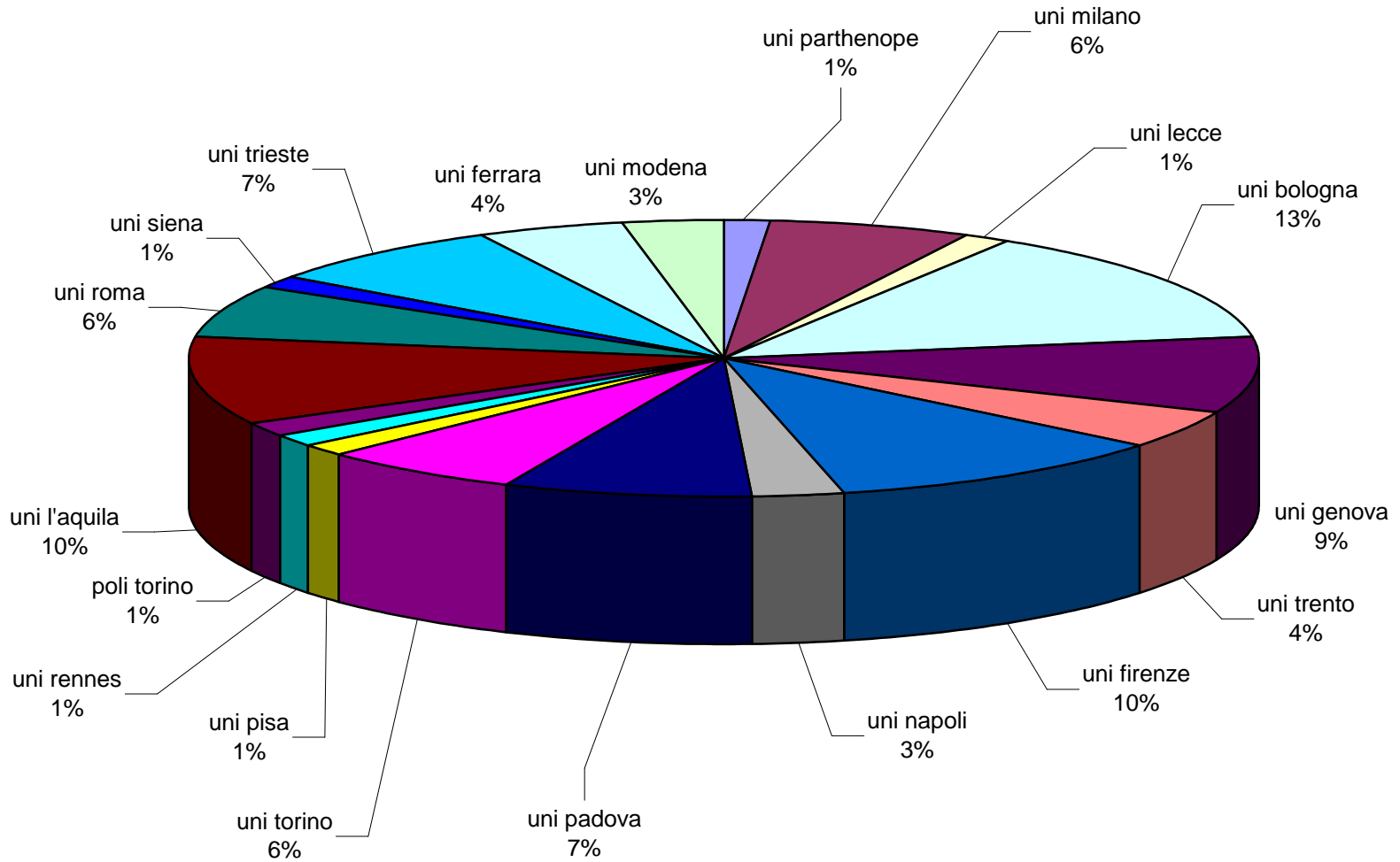
laurea o diploma



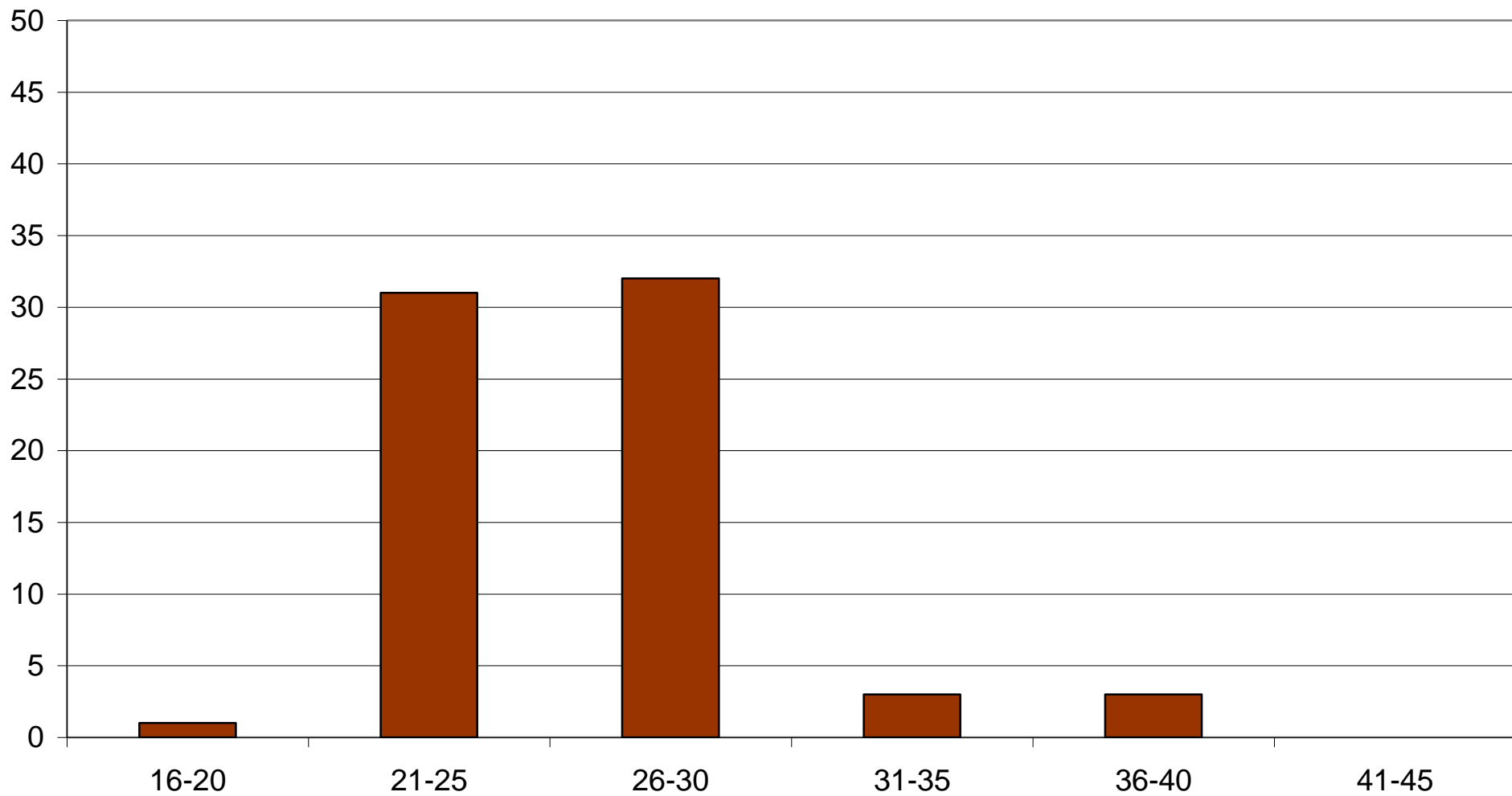
tipo di laurea



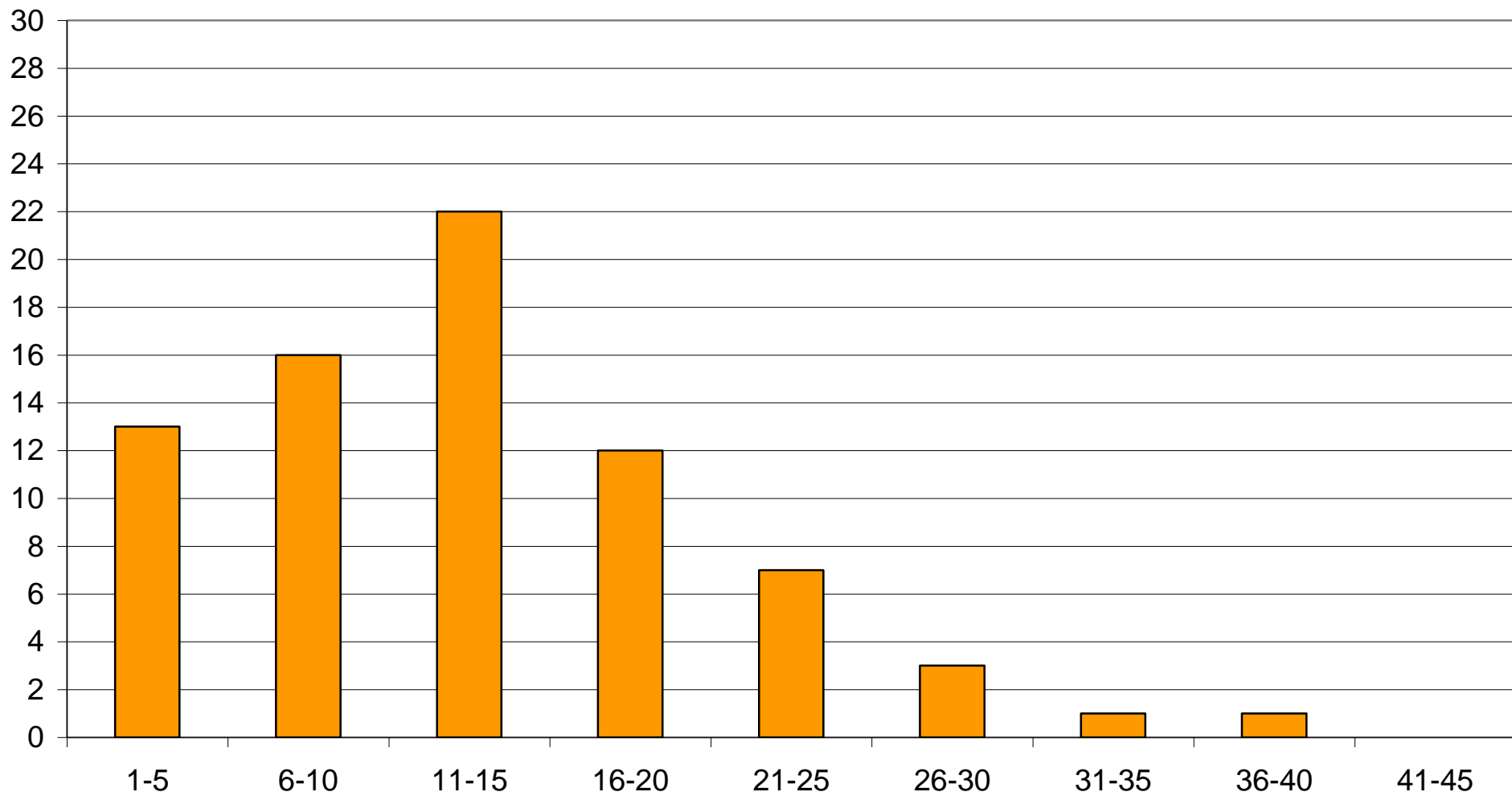
laurea città



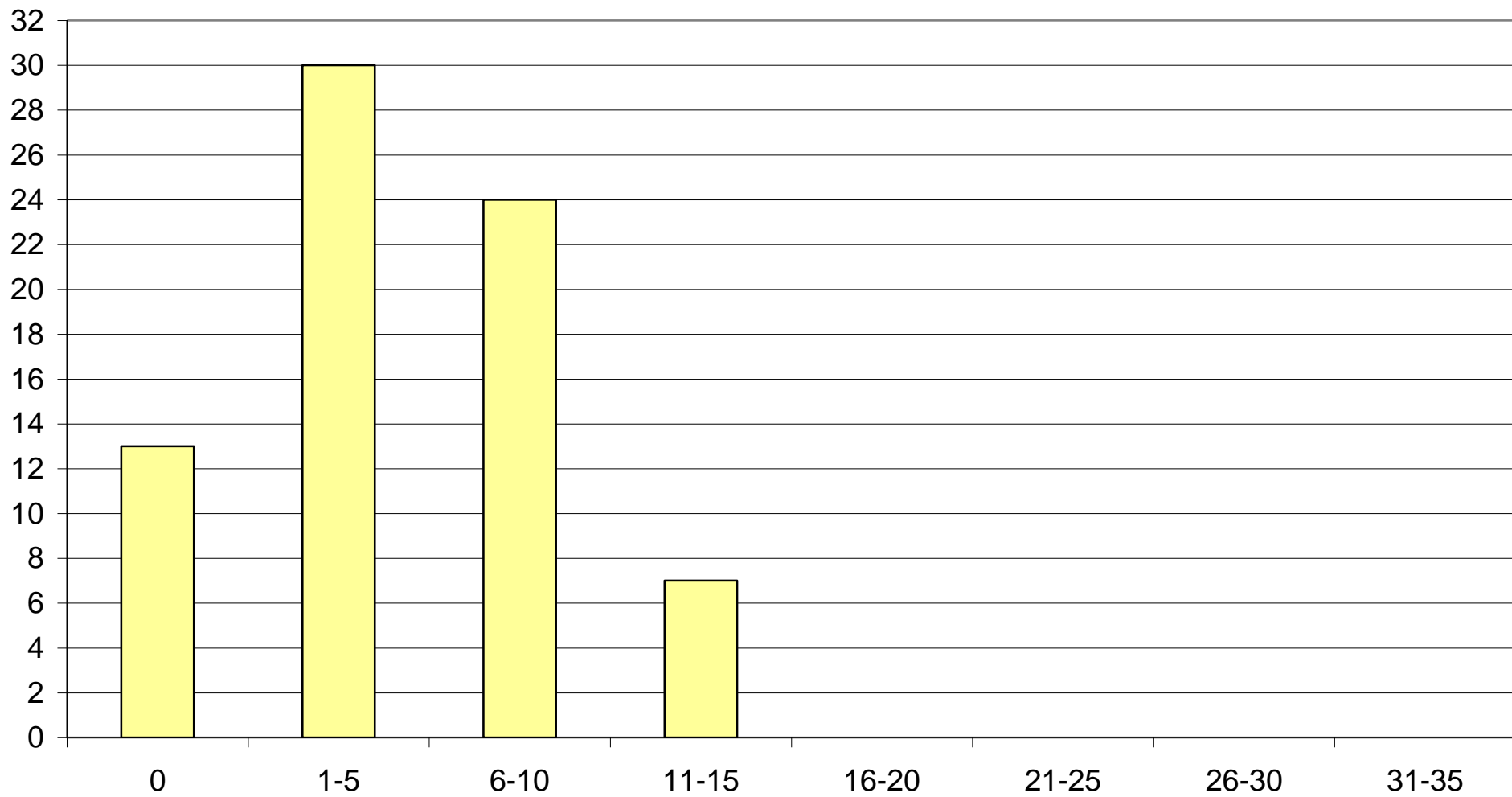
anni alla laurea



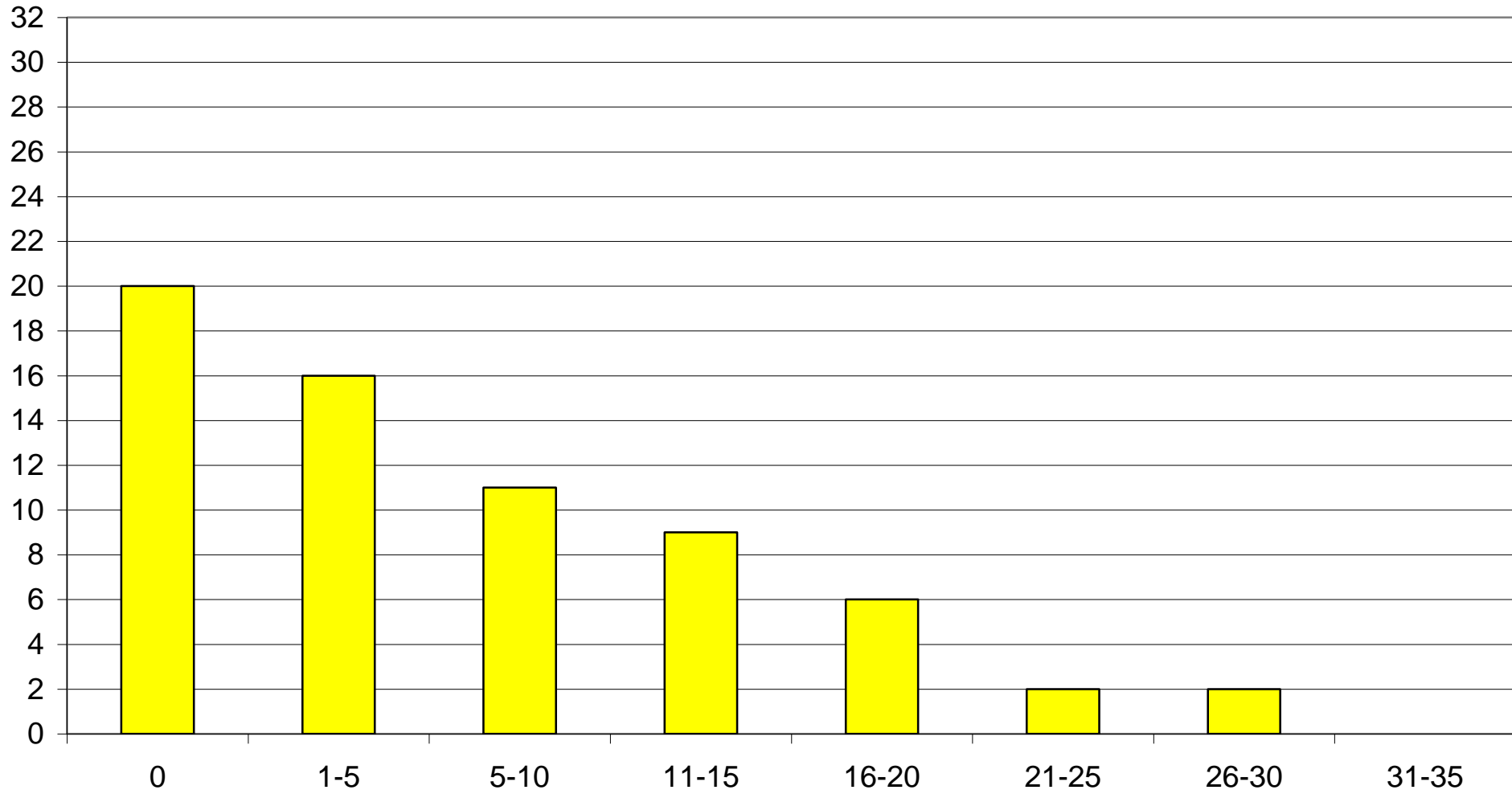
anni di lavoro totali



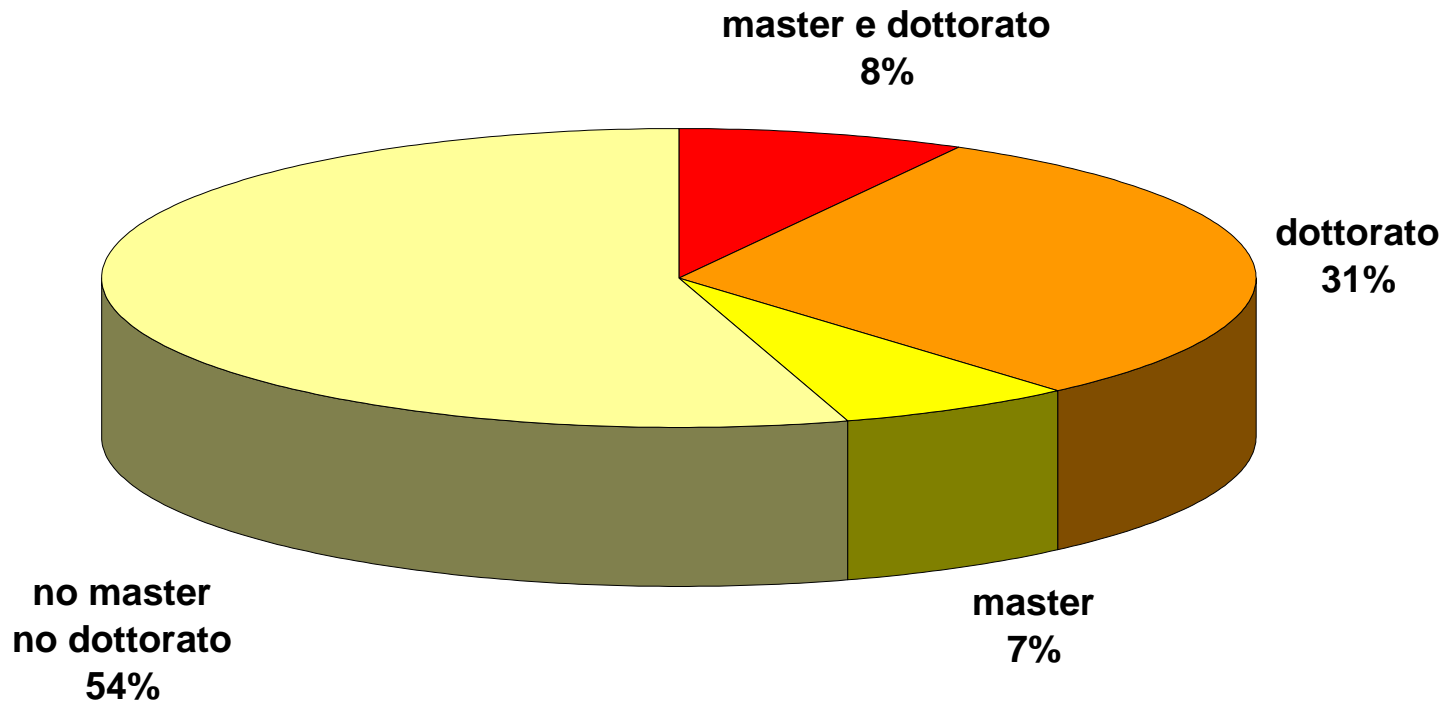
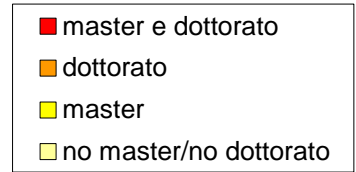
anni di lavoro precario



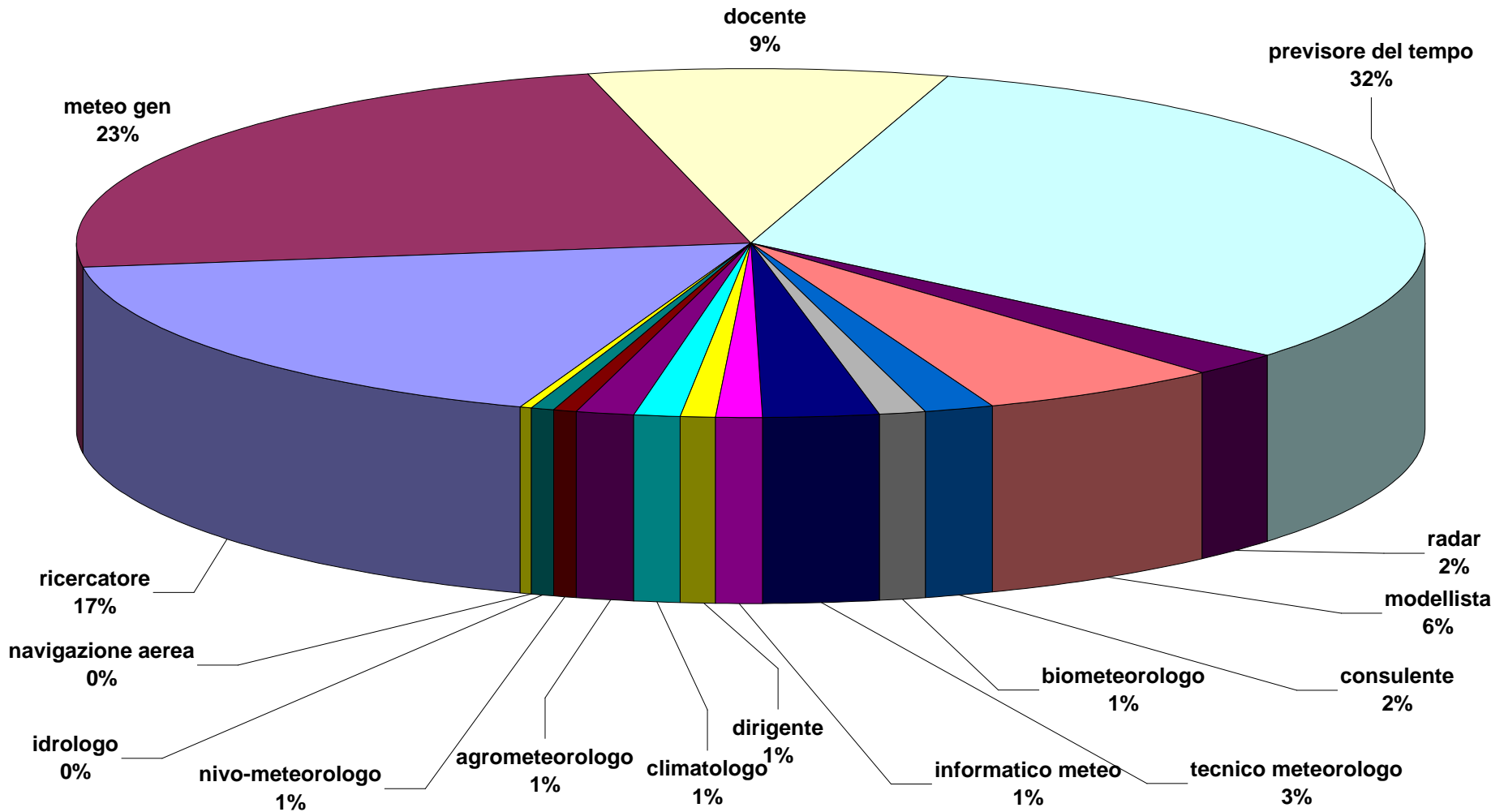
anni di lavoro stabile



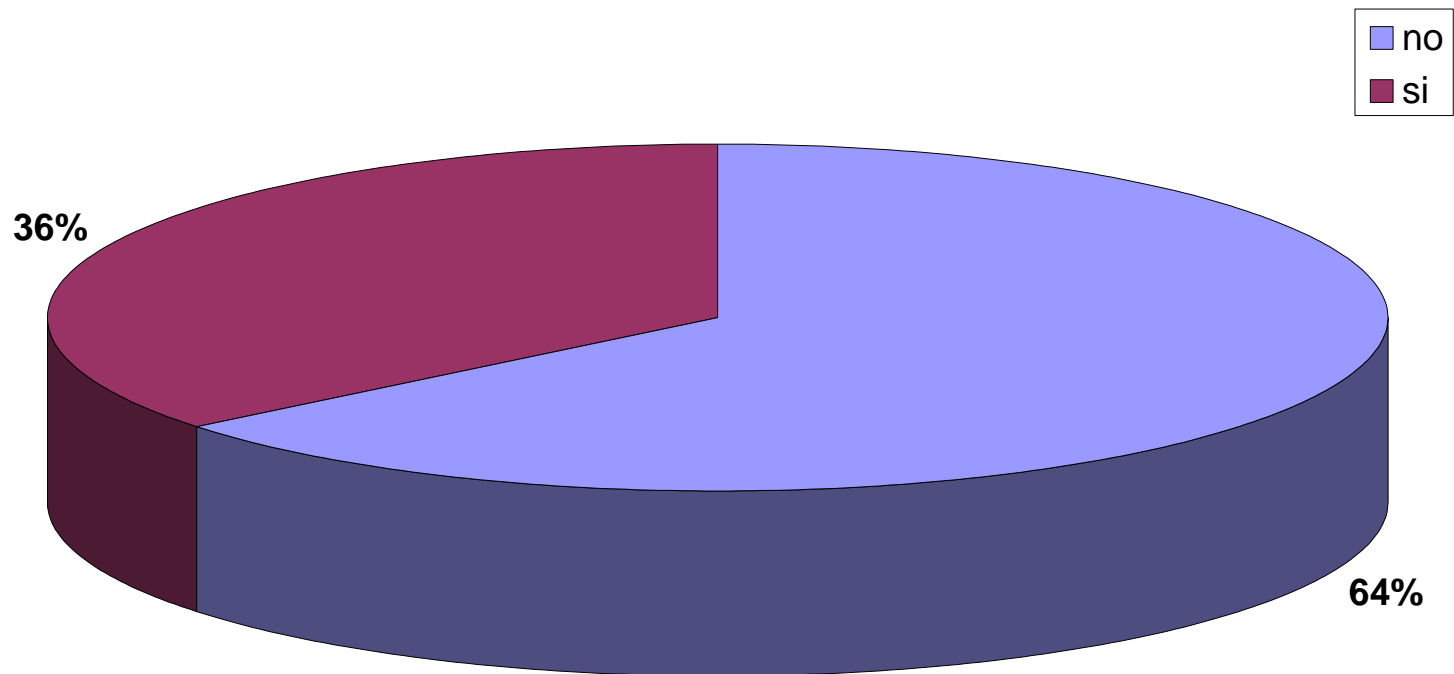
master e dottorato



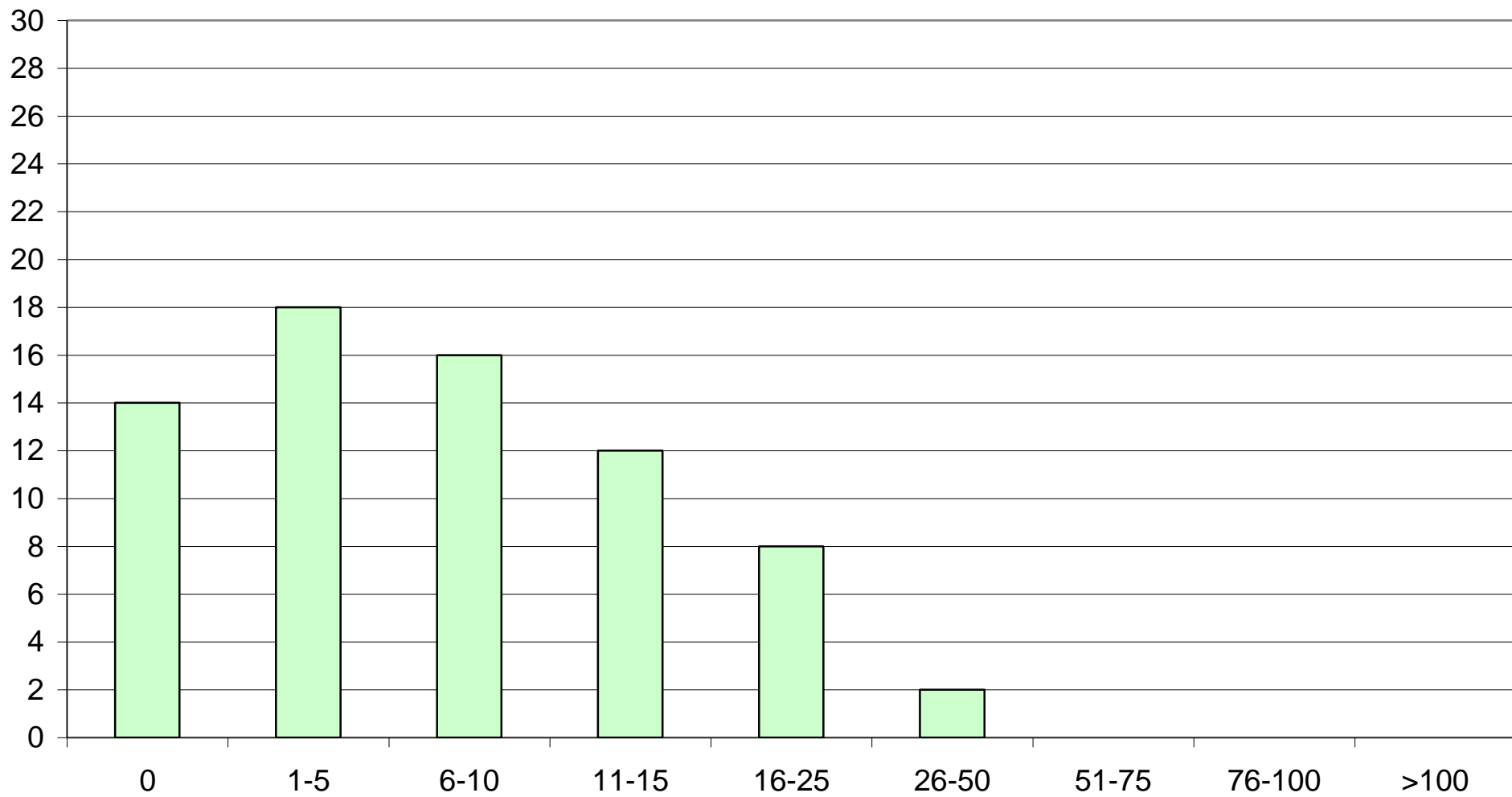
suddivisione anni-competenze



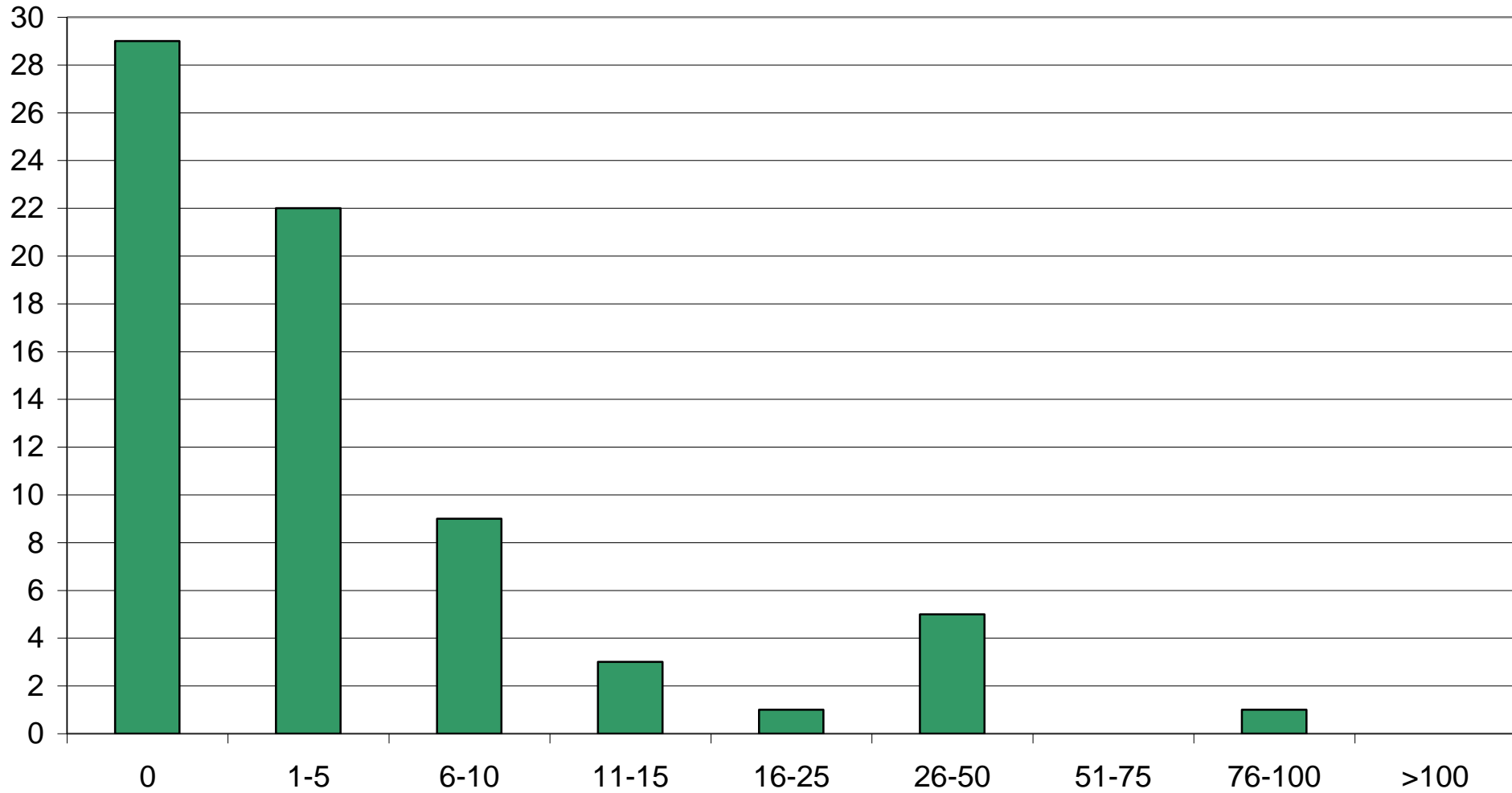
corsi di meteorologia con esame



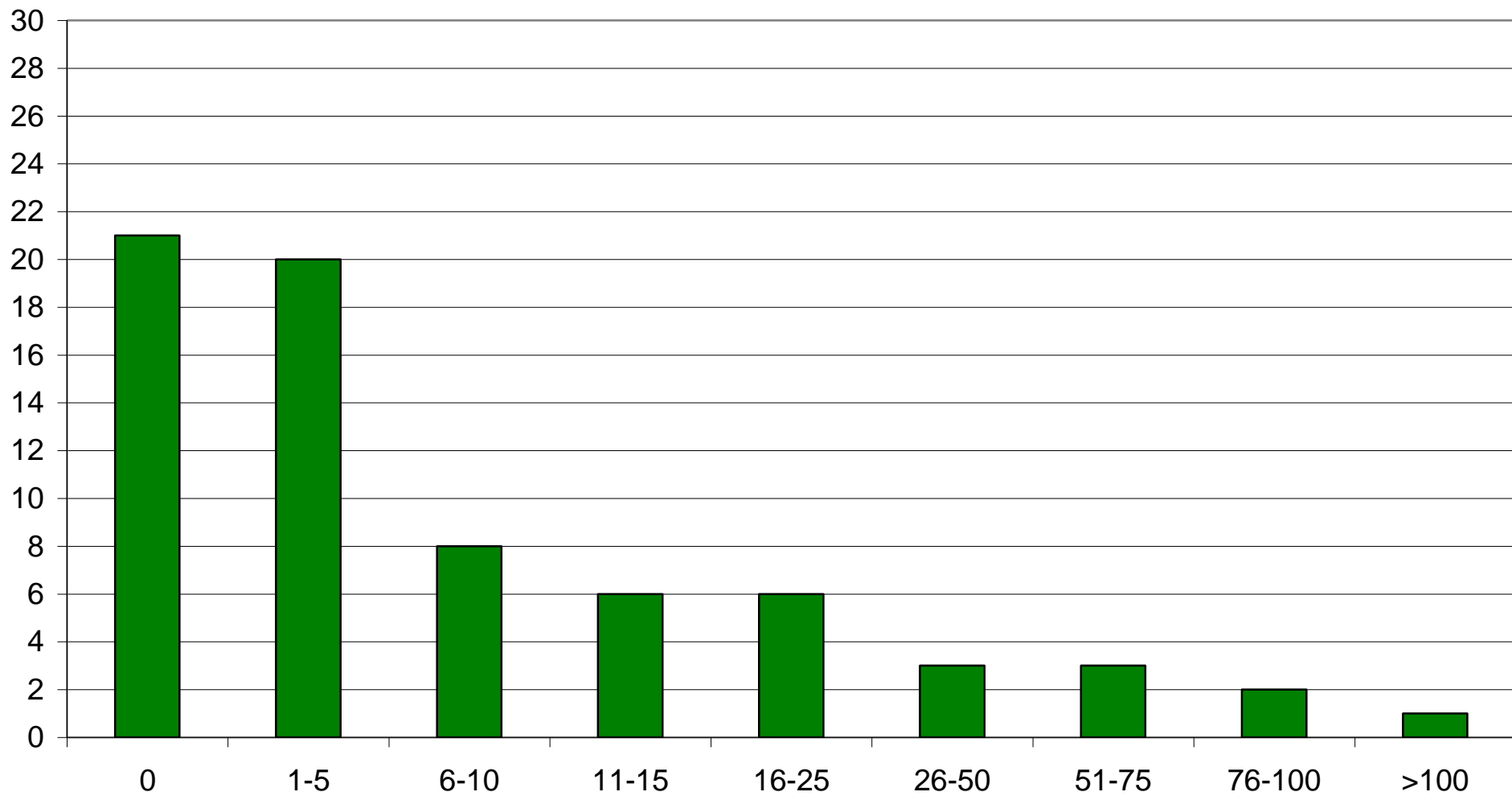
conferenze - uditore



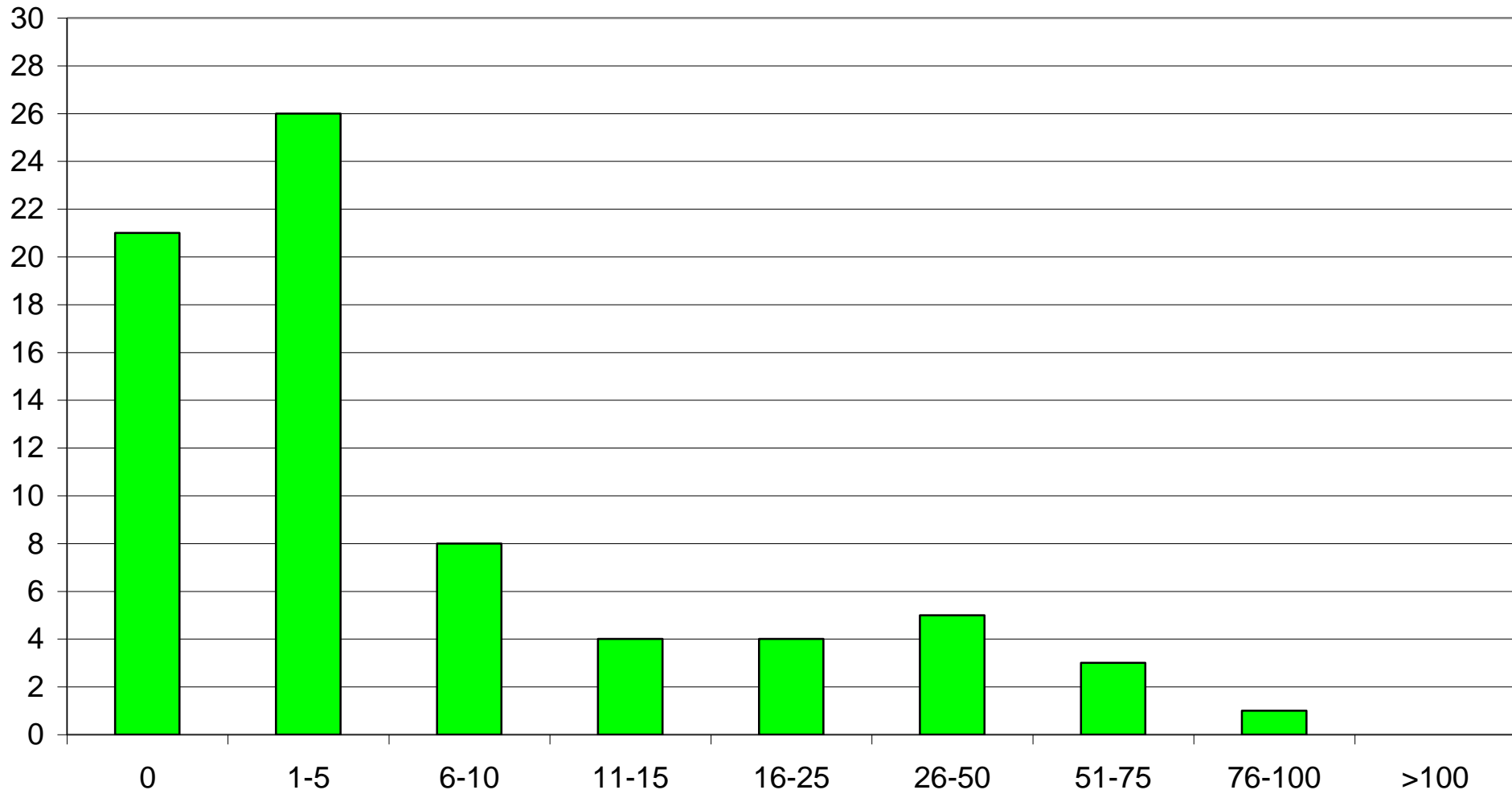
conferenze - relatore



conferenze Internazionali - partecipazione



articoli scientifici internazionali - totali



articoli scientifici internazionali - primo nome

